

06 January 2014

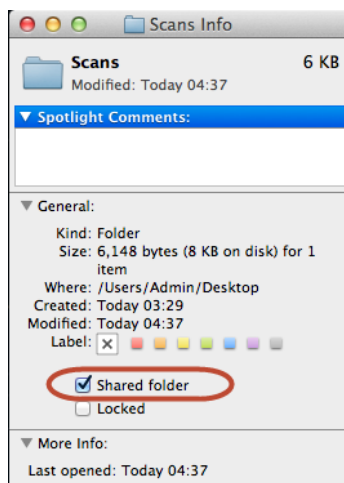
Apple OS X 10.9 – Scan to Folder (SMB)

The bulletin details the setup required to scan to folder via SMB on Apple OS X 10.9. This applies to the following models, **Gemini Plus** (MX2310/3111U), **Gemini Plus II** (MX2614/3114), **Aries** (MX2610/3110/3610), **Aries II** (MX2640/3640), **Virgo** (MX4112/5112), **Virgo II** (MX-4140/4141/5140/5141) **Polaris** (MX-6240/7040) and **Hercules2** (MX-M904/1054/1204).

1. Firstly you need to setup the folder that you would like the scans to be sent to. For this example we have setup a Scans folder on the desktop of the Mac.



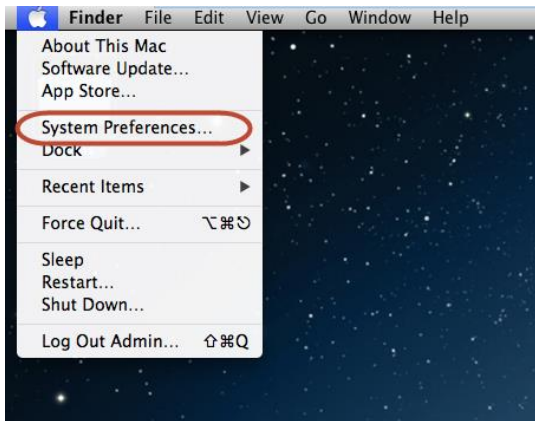
2. This folder now needs to be shared. This can be done by right clicking (CTRL+Click if using a single button mouse) the folder and selecting "Get Info"
3. Now tick the Shared Folder Button.



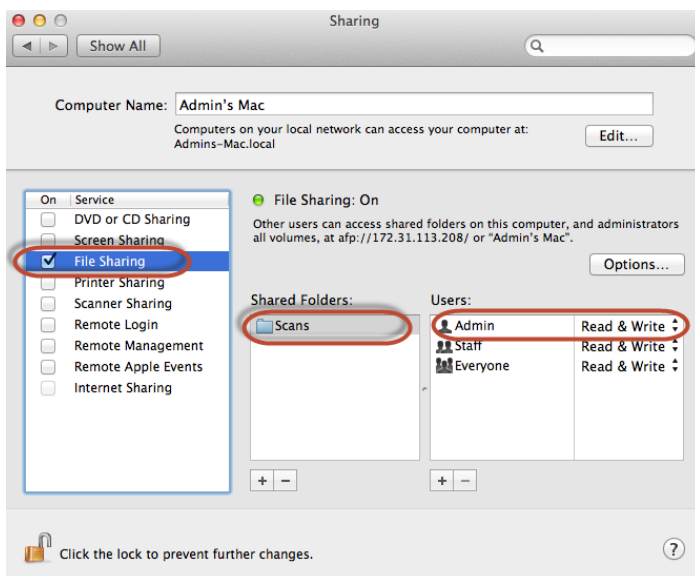
For further information please contact solutionsupport.suk@sharp.eu

06 January 2014

- Now SMB File sharing needs to be switched on. This can be done by going into System Preferences and then selecting "Sharing"



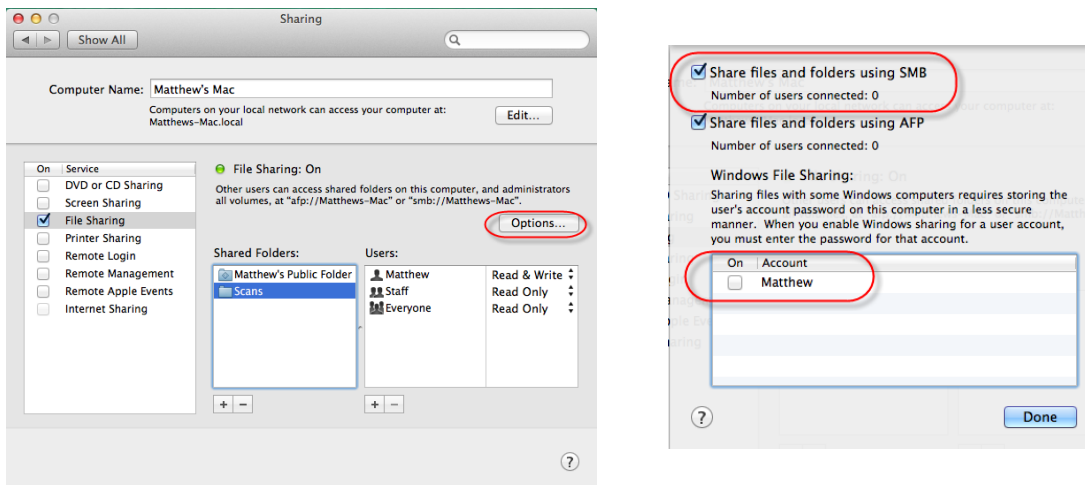
- From this window, you now need to tick the "File Sharing Option". The Scans folder should be listed in the Shared Folder section and the user you will be using for authentication needs to be in the right hand section. (In this example we will be using the "Admin" user). This user should have Read & Write permissions to the folder.



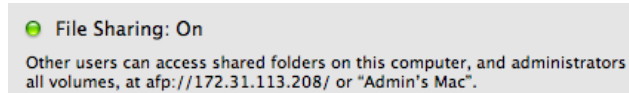
For further information please contact solutionsupport.suk@sharp.eu

06 January 2014

- Also from the window, click on the 'Options' key. Make sure 'Share files and folders using SMB' is checked and the user account you will be using to authenticate for scanning is ticked in the lower box.

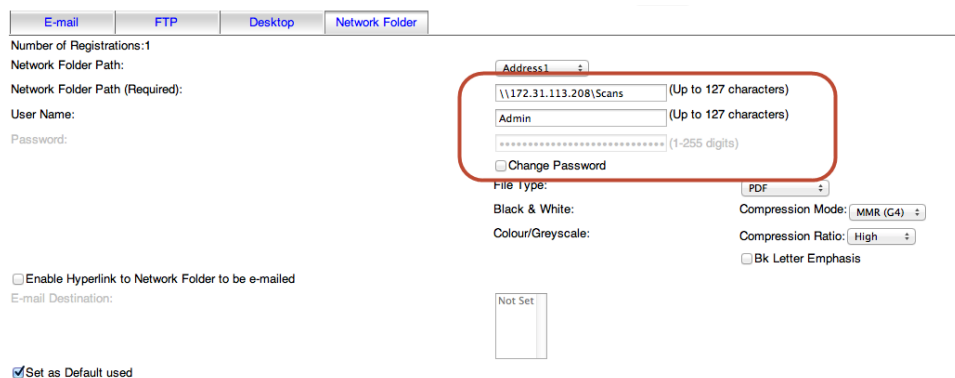


- Also from this window you will see the IP address/Host Name of you Mac. This will be needed to setup the scan destination on the machine.



- Go to the web browser of the Sharp device and add a new destination. The address for the scan destination will be <\\<MACIPADDRESS>\<NAMEOFSCANFOLDER>>. (The IP Address can be substituted for the Host Name of the Mac)

The user name will be the account you added into the sharing section in step 5, along with the password for this user.



- SMB scanning is now be setup on the Sharp device.

For further information please contact solutionsupport.suk@sharp.eu